

### Specifications

備注 (Remark)

1. 材料 (Material)

膠芯: PA9T/LCP+30% G.F UL94V-0, 顏色: 黑色

Housing: PA9T/LCP+30% G.F UL94V-0,

Color: Black

端子: 磷銅

Contact: Phosphor Bronze

2. 特性 (characteristics):

額定電流: 1.0AMP

Rating Current: 1.0AMP

接觸阻抗: 20mΩ Max

Contact Resistance: 20mΩ Max

絕緣阻抗: 1000MΩ Min

Insulating Resistance: 1000 MΩ Min

耐電壓: AC 500V/分鐘

Withstanding Voltage: AC 500V/Minute

溫度範圍: -55° C to +125° C

Temperature Range: -55° C to +125° C

BF127-13PXXXX340X1

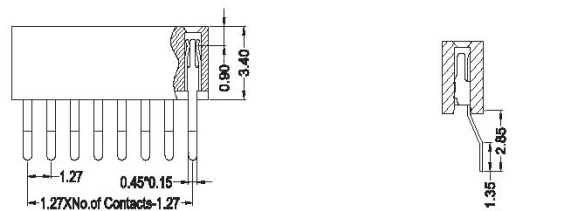
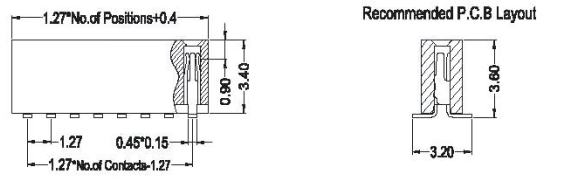
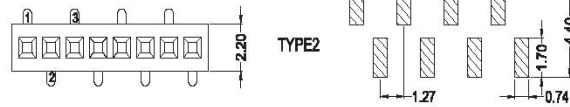
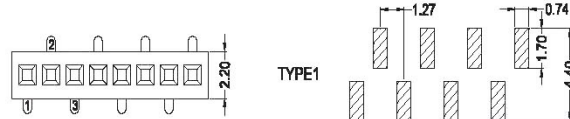
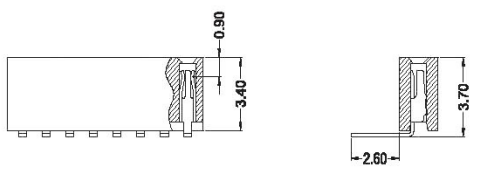
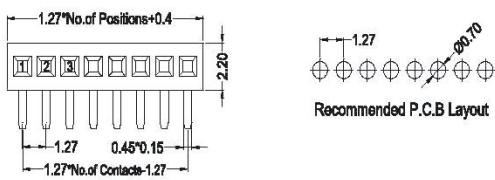
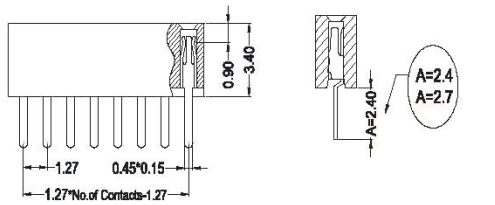
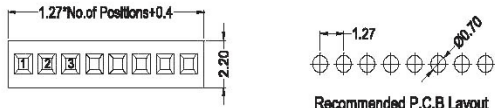
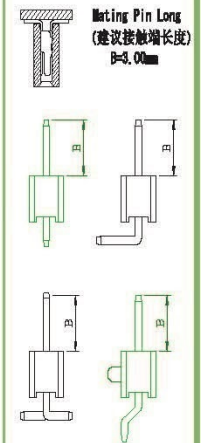
BF127-13RXXXX340X1

BF127-13SXXXX340X1

BF127-13SXXXX340X2

BF127-13ZXXXX340X1

Mating With/配對公座:



BF127-13

X

XX

XX

340

X

X

**Contact Shape:**  
P: Straight  
R: Right Angle  
S: SMT  
Z: 90° SMT

**No. Of Pins Per Row**  
02-50P

**Contact Plating**  
Full Of Gold  
G0=0.8u"  
~  
G9=30u"  
S1=Ordinary Tin Plated  
S2=Matte Tin Plated  
S3=Tin-plated High-temperature

**Packing**  
A: PE Bag  
R: Tape & Reel  
T: Tube  
D: Tube+CAP  
E: Tray

**Journal Number**  
1: Type1 (without Post)  
2: Type2 (with Post)

FEMALE HEADER